

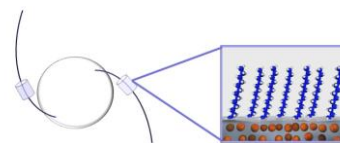
Press Release

FOR IMMEDIATE RELEASE

Buddy Ratner, PhD, and Tueng Shen, MD, PhD, Present Breakthrough Technology— “Innovative Drug Delivery System Promises Improved Cataract Surgery Outcomes”

Bellevue, WA, December 10, 2008—Buddy Ratner, PhD, and Tueng Shen, MD, PhD, recently presented the current results of collaboration between Bellevue-based Inson Medical Systems and the University of Washington to develop a novel drug delivery device that can be attached to the haptic arms of an IOL. This technology is applicable to both human and veterinary cataract surgery and is compatible with the newest folding IOLs; Inson submitted its INAD (Investigational New Animal Drug application) to the Center for Veterinary Medicine to further study its IOL antibiotic delivery device Ocuxin® this week.

Inson Medical Systems is commercializing technology co-developed at the University of Washington by Buddy Ratner, PhD, and Tueng Shen, MD, PhD, to minimize complications after cataract surgery.



Dr. Buddy D. Ratner is one of the founding fathers of modern bioengineering and is a Fellow of the National Academy of Engineering. Dr. Ratner is the Michael L. and Myrna Darland Endowed Chair in Technology Commercialization, Professor of Bioengineering and Professor of Chemical Engineering at the University of Washington. He received his PhD (1972) in Polymer Chemistry from the Polytechnic Institute of Brooklyn.

Dr. Tueng T. Shen is the director of the Refractive Surgery Center at the University of Washington Medical Center. Dr. Shen was named the first Lions Assistant Professor in the Department of Ophthalmology at the University of Washington in 2003. She specializes in refractive surgery, medical and surgical management of corneal disorders and cataract surgeries. She received her MD from Harvard Medical School and her PhD in Medical Engineering and Chemistry from Massachusetts Institute of Technology.

About Inson Medical Systems, Inc.

Founded in 2007, Inson Medical Systems, Inc., is a privately held, specialty drug delivery company dedicated to improving patients' lives through the development and commercialization of innovative alternative drug delivery solutions. The Company's initial efforts are focused in the area of ophthalmology for both human and veterinary patients. For more information, please see <http://www.insonmed.com>.